



## MetroQuest Round 2 Summary

August 2015

### OVERVIEW

In order to broaden the geographic extent of outreach for the Great River Road Corridor Management Plan, an interactive online survey was available from April 21, 2015 to July 18, 2015. The MetroQuest survey was developed to gain feedback consistent with the second round of open houses, which took place in May 2015. It included opportunities to share opportunities for improvement along the Great River Road, learn about the project, and provide feedback on CMP goals and strategies. A total of 226 people took the survey, of which 127 (or 56%) provided demographic data. All age ranges between 19 and 60+ were represented, with 10 to 44 responses in each age group (Figure 1). Many of those responding either live along or enjoy travelling the Great River Road.

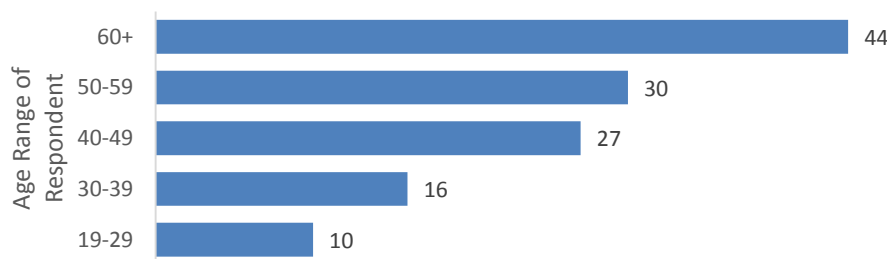
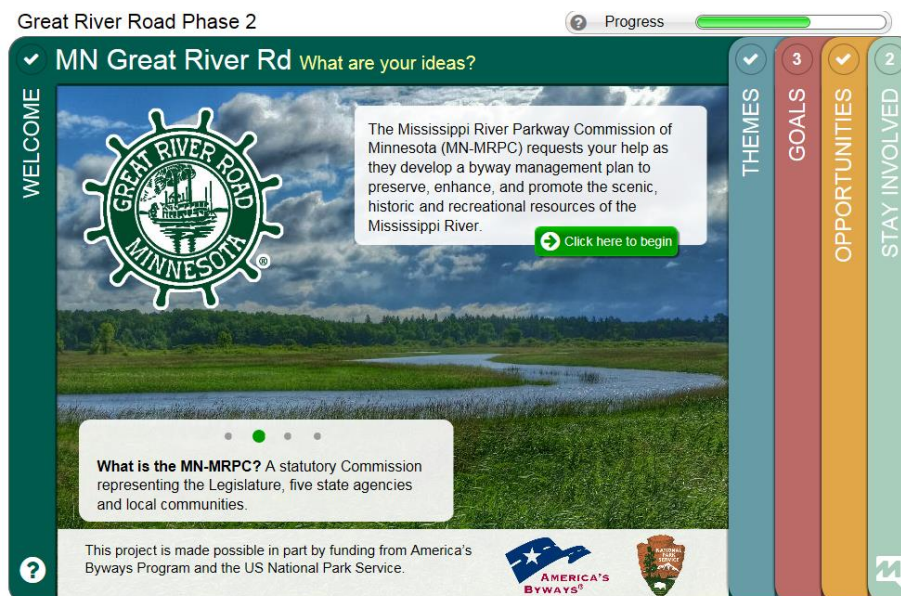


Figure 1: Age of Respondents on Metro Quest (Round 2)



More detailed information and participant responses are provided in the following pages.



## ▲ SURVEY RESULTS

### Themes

---

Over the past year, communities, visitors, and agencies have provided input to develop strategies and goals for the Great River Road. From these goals, the five themes of work emerged: Placemaking, Health & Active Living, Facilities Management, Technology and Social Media, and Education and Engagement. While all of the work is important and inter-related, survey respondents were invited to provide feedback on what should be completed first for the Great River Road.

Health & Active Living and Facilities Management were the top-ranked areas of focus. Placemaking and Education & Engagement tied for the middle slots. Technology & Social Media ranked last on the list.

Area of Focus	Score
<b>Health &amp; Active Living</b>	2.47
<b>Facilities Management</b>	2.66
<b>Placemaking</b>	2.75
<b>Education &amp; Engagement</b>	2.75
<b>Technology &amp; Social Media</b>	4.26

### Objectives

---

Each theme has multiple identified objectives. Survey respondents were invited to prioritize the objectives within each theme as near-, mid-, or long-term. Many of the respondents left comments regarding each objective. These priority rankings and comments are found on the following pages.



## HEALTH AND ACTIVE LIVING

Health & Active Living received 497 total prioritization votes. Participants chose “leverage existing state and local health initiatives to position the route as a walking, cycling, and paddling destination” as the top near-term strategy.

Health & Active Living Strategies	Near-Term	Mid-Term	Long-Term	Total
<b>Leverage existing state and local health initiatives to position the route as a walking, cycling, and paddling destination</b> <b>Comments:</b> <ul style="list-style-type: none"> <li>▶ Develop greater awareness and connection with the Mississippi River Trail!</li> <li>▶ People are more interested in preserving areas they know and love. Build the love to get support for the next stages.</li> <li>▶ Please make walking and cycling a priority!</li> <li>▶ Unimportant. It already is.</li> </ul>	104	43	19	166
<b>Highlight healthy living resources that encourage active experiences along the Great River Road</b> <ul style="list-style-type: none"> <li>▶ If we can get younger families active and experiencing the byway we may have a larger pool of advocates and volunteers as the project moves ahead</li> <li>▶ Just please don't replicate the obnoxious signs on every regional bench: Be active! be green! Command voice, when I am already out for a walk? Yuck. Talking down to me.</li> <li>▶ The booklets available at visitor information stands are very helpful with maps, ads, and calendars. Hope funding is maintained for this.</li> <li>▶ This is the most important aspect of the Great River Road experience</li> </ul>	96	50	19	165
<b>Partner with healthy and active living groups to cross-promote healthy, active experiences</b> <ul style="list-style-type: none"> <li>▶ A biking route WITHOUT motor vehicles would be great. Charge bike riders an annual fee to cover the cost; like we do with our cars and trucks. Not sure why all the bikes out there are not charged a fee each year now.</li> <li>▶ Ban chemical herbicide and insecticide spraying along the route.</li> <li>▶ I'm sure that groups like the Y have existing groups that target underserved populations in MN with outdoor exploration, and would be glad for something ready-made for them to partner with in the region.</li> <li>▶ Not important. Let these groups do for themselves, make your services available to all.</li> <li>▶ These partnerships also need to connect with diverse populations (ethnically and economically) all along the river</li> </ul>	69	65	32	166



## FACILITIES MANAGEMENT

Facilities Management received 494 total prioritization votes. Participants chose “assure safe travel through continuous and consistent route signage and mapping” as the top near-term strategy.

Facilities Management Strategies	Near-Term	Mid-Term	Long-Term	Total
<b>Assure safe travel through continuous and consistent route signage and mapping</b> <b>Comments:</b> <ul style="list-style-type: none"> <li>▶ I would love to see a downloadable GPS route that encompasses the whole road. The current map options (written directions from north to south only, maps at too small a scale) are severely limiting. I have found several locations in the metro where signage</li> <li>▶ lots of people bike on the walking paths, which can be frustrating and dangerous for walkers and runners. I understand why they do it, the bike path along the river road is narrow and only on one side, and I imagine, some people are timid about riding so</li> <li>▶ Safe travel for non-motorized users should be a priority.</li> <li>▶ Signs are good now outside of big cities. Would be nice to de-clutter signage in cities.</li> </ul>	104	45	14	163
<b>Develop the byway as a seamless travel experience that honors the Mississippi River through thoughtful place-making.</b> <b>Comments:</b> <ul style="list-style-type: none"> <li>▶ Everything here seems very similar to "placemaking" which is a bureaucratic term...</li> <li>▶ I can't tell what this means.</li> </ul>	73	60	33	166
<b>Coordinate modal travel options (air, rail, boat, vehicular, transit, bicycle and pedestrian) so travelers can focus on enjoying the journey</b> <ul style="list-style-type: none"> <li>▶ Again - work with the MRT.</li> <li>▶ During the winter months trim/cut the trees along the river so we can actually SEE the river from the road!</li> <li>▶ Is there really much air or rail travel along the Mississippi? Focus on boat, vehicular, transit, biking &amp; pedestrian.</li> <li>▶ Is there really much air or rail travel along the Mississippi? Focus on vehicular, transit, biking &amp; walking.</li> <li>▶ Lots of people bike on the walking paths, which can be frustrating and dangerous for walkers and runners. I understand why they do it, the bike path along the river road is narrow and only on one side, and I imagine, some people are timid about riding so</li> <li>▶ Works well now except in big cities.</li> </ul>	47	65	53	165



## PLACEMAKING

Placemaking received 486 total prioritization votes. Participants chose “connect visitors to places and communities, along the route, through trail connections and signage” as the top near-term strategy.

Placemaking Strategies	Near-Term	Mid-Term	Long-Term	Total
<b>Connect visitors to places and communities, along the route, through trail connections and signage</b> <b>Comments:</b> <ul style="list-style-type: none"> <li>▶ Keep signs to minimum. Love the River Road logo. Folks can buy maps or use internet - especially now that so many people have phones with GPS.</li> <li>▶ The byway currently feels like two very different places. It should be more connected to promote the beauty and versatility of the waterway.</li> <li>▶ Very important to connect communities along the river to the experience of the river. Cedar Riverside community does not seem to appreciate or interact much with the river. Develop this connection.</li> </ul>	76	64	22	162
<b>Manage public resources and facilities to ensure safe and accurate navigation, such as wayside rests and community maps</b> <b>Comments:</b> <ul style="list-style-type: none"> <li>▶ Good now.</li> <li>▶ I would like to know more about what the Great River Road is. I live near it in Minneapolis, but I only understand it as part of the Grand Rounds. I would like to better understand the context more fully by seeing signs and other information</li> </ul>	73	62	27	162
<b>Preserve and enhance the unique sense of place along the Mississippi River by engaging communities, public agencies, and private business to become river stewards</b> <b>Comments:</b> <ul style="list-style-type: none"> <li>▶ Good now.</li> <li>▶ Preservation of what we have is important.</li> <li>▶ Preserving and enhancing should be a continuous goal - near, mid and long-term.</li> <li>▶ This seems like an ongoing activity that could be kept up through a continuous leadership board of some sort. Maybe that already exists, not sure.</li> </ul>	67	52	43	162



## EDUCATION & ENGAGEMENT

Education & Engagement received 647 total prioritization votes. Participants chose “engage diverse populations of all ages, locally and afar, to experience the Mississippi River” as the top near-term strategy.

Education & Engagement Strategies	Near-Term	Mid-Term	Long-Term	Total
<b>Engage diverse populations of all ages, locally and afar, to experience the Mississippi River</b> <b>Comments:</b> <ul style="list-style-type: none"> <li>▶ Participants were able to provide comments on the overall theme and on each individual strategy.</li> <li>▶ Build the love of the area.</li> <li>▶ Build the love of the area and more people will support later stages.</li> <li>▶ Essential! There are so many people living along the river that never get to actually explore it, especially in Twin Cities neighborhoods like Cedar-Riverside!</li> <li>▶ Making sure the river corridor is accessible to marginalized populations should be a top priority - what populations have been denied access so far who should be focused on first? Race, class, ability/disability</li> <li>▶ Pretty vague goal - needs a lot more specifics to be useful</li> <li>▶ This should be ongoing as well as starting now.</li> </ul>	81	50	30	161
<b>Partner with schools and other institutions to educate children and adults about the Great River Road and Mississippi River resources</b> <b>Comments:</b> <ul style="list-style-type: none"> <li>▶ I learned about the Great River Road in 6th grade, and now I'm in my 50s. Get kids involved as much as possible.</li> <li>▶ setup an ongoing program</li> <li>▶ Too many children spend too much time indoors and do not realize what wonder waits them outside! I grew up going fishing on the River with my Grandmother; what wonderful memories I have.</li> <li>▶ Wouldn't this be job of schools? Make curriculum available like MHS.</li> </ul>	73	63	25	161
<b>Engage residents, visitors, and Tribal Nations in order to share their unique Great River Road stories, places and experiences</b>	67	67	28	162
<b>Train visitors, residents, public agencies, and private businesses to be Great River Road Ambassadors that promote the route's many unique and enriching experiences</b> <b>Comments:</b> <ul style="list-style-type: none"> <li>▶ I don't know about the term "train", how about "invite" or "encourage".</li> </ul>	47	65	51	163





## TECHNOLOGY & SOCIAL MEDIA

Technology & Social Media received 489 total prioritization votes. Participants chose “develop the existing Great River Road web-based and mobile tools to serve PC, tablet and phone” as the top near-term strategy.

Technology & Social Media Strategies	Near Term	Mid Term	Long Term	Total
<b>Develop the existing Great River Road web-based and mobile tools to serve PC, tablet and phone</b> <b>Comments:</b> <ul style="list-style-type: none"> <li>▶ A downloadable GPS track would be very useful, especially on a motorcycle where consulting a written map en route is difficult.</li> <li>▶ At least one person per car has a smart phone.</li> <li>▶ Plenty of free maps already available.</li> <li>▶ Social media is the tool everyone uses to access on their phones information that is quick. I placed this at the bottom but this goals actually feeds into all of the above goals as well.</li> <li>▶ This can be done at minimal cost early. It is important to final product but not crucial in time frame.</li> </ul>	83	61	20	164
<b>Utilize social media to promote and engage visitors</b> <b>Comments:</b> <ul style="list-style-type: none"> <li>▶ Already do a great job. One FB page plenty.</li> <li>▶ Ditto</li> <li>▶ It would be worthwhile to develop some kind of electronic "stamp" or "badge" that visitors could scan in with their phones, like with a QR code or something, to work like how state park stamps work, so that people with a "completionist" bent would want to</li> </ul>	68	56	38	162
<b>Utilize technology to improve the efficiency and effectiveness of byway management</b> <b>Comments:</b> <ul style="list-style-type: none"> <li>▶ Ditto</li> <li>▶ Not sure how this would work.</li> </ul>	50	60	53	163



## Places

In this portion of the MetroQuest survey, participants placed pins to suggest improvements related to multimodal travel, traveler amenities, and river views along the Great River Road. There were 347 total pins placed. Bicycles received the most opportunity pins, followed by river views.

Pin Type	Number
Bicycle	103
River Views	99
Pedestrian	52
Other	37
Automobile	29
Watercraft	27
Total Pins	347

Improving access or adding facilities received the most opportunity pins of the pre-set options across all modes. However, many respondents did not define their opportunity type by mode.

Opportunity by Mode	Bicycle Pins	Pedestrian Pins	Automobile Pins	Watercraft Pins
Undefined	54	21	20	12
Improve Access	23	14	3	3
Add Facility	17	9	2	12
Connect Facility	9	8	2	0
Decrease Access	0	0	2	0
Grand Total	103	52	29	27

The most common river view opportunity was to protect cherished views. However, many respondents did not define their opportunity for river views.

River View Opportunity	Number of Pins
Undefined	47
Protect this view	26
Notable view	21
Impaired view	5
Grand Total	99

Figure 2 (next page) shows all 347 pins placed by mode.



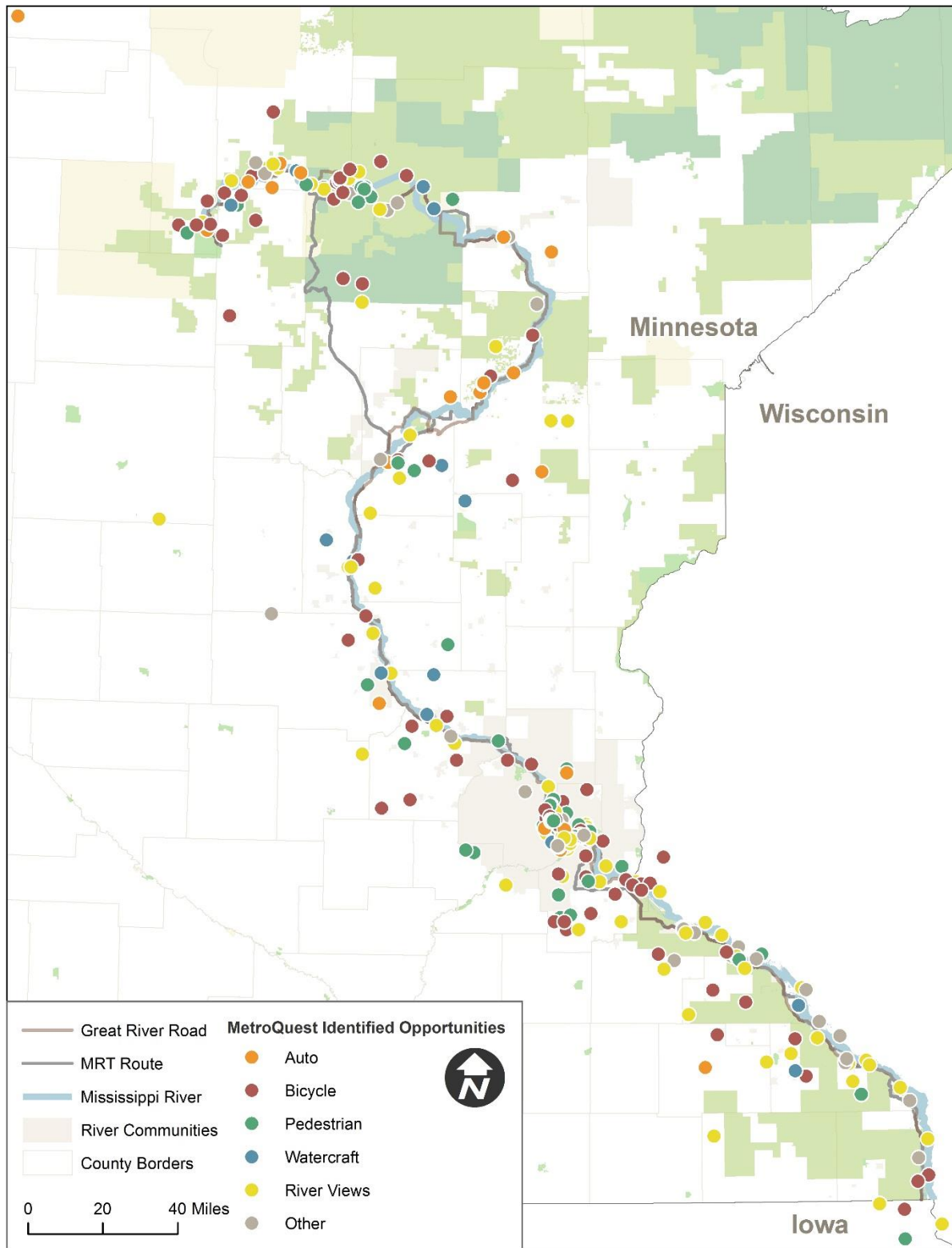


Figure 2: Opportunity Pins Placed through Metro Quest (Round 2)



## SPATIAL COMMENTS

The following comments were provided through the MetroQuest Opportunities page. Comments are sorted by the pin/mode the user selected to place on the map.

### Automobile Comments

- ▶ Difficult to follow route along river in Minneapolis north to Anoka area. Confusing route and it's sometimes blocked or really shabby. Embarrassment to state to treat this area this way!
- ▶ directions and information
- ▶ Do not forget the elder and disabled community when providing access to overlooks or even the water edge.
- ▶ Highway 2 from Grand Rapids to Duluth is only a 2-lane highway. It needs to be a 4-lane highway.
- ▶ i believe that river road needs to be more carefully monitored for speed. currently it is used as a through-way for traffic coming and going to the university. it must be parkway first, a place for recreation. secondary use is commuting.
- ▶ improve interactions between cars and other vehicles
- ▶ Need a pull off or parking and interpretation for this wetland view.
- ▶ need to promote co rd 10 better for motorcycling
- ▶ open the road!
- ▶ Pave the GRR for improved motorcycle, antique car, charter bus and other vehicular travelers
- ▶ promote grand rapids for motorcycling the river road
- ▶ Provide parking for visitors viewing the river
- ▶ Repair West River Road!!!
- ▶ restore wayshowing signing systematically along route
- ▶ The metro area could benefit from improved signage along the route.
- ▶ This is when the byway connection between northern MN and Southern MN breaks down.
- ▶ wayside parking
- ▶ wayside parking, pedestrian viewing location

### Bicycle Comments

- ▶ A great way to connect the bike path along the river would be to go around the outside edge of the airport, or to utilize the street that runs alongside the airport.
- ▶ Add bicycle bridge to interpretive drive off.
- ▶ Add bicycle trail from Norway Beach to Pennington following along the lakeshore.
- ▶ Add bicycle trail from Norway Beach to Pennington following the lakeshore.
- ▶ Add bicycle trail to Pennington
- ▶ Add bike facility along this park of river
- ▶ Add consistent shoulders on TH 26 that meet design guidelines
- ▶ Add seperated facility along TH 61 from Lake City downtown to HokSiLa Park
- ▶ Add shoulders to Dayton River Rd
- ▶ Again, trail network needs to be filled in along North and Northeast Mpls
- ▶ better bike trail surface
- ▶ better pathways for cyclists not comfortable with using the roads, which are often in better condition for travel.
- ▶ Bicycle paths
- ▶ Bike and walk path combined/narrow and falling down the bluff.
- ▶ Bike lane on river road in addition to bike paths.
- ▶ Bike paths needs to be connected from through Snelling State Park and more easily access the River. The Path should be pulled away from the road and close to the rive from Minneapolis to St. Paul
- ▶ bike paths throughout
- ▶ bike trail connecting Soo Line trail with Paul Bunyan trail aling the river



- ▶ connect Bemidji with Cass Lake and the DNR and Forest Service paved trail network
- ▶ connect to the superior trail, and I can't think of the one that starts around the Duluth area
- ▶ create a bike crossing here
- ▶ Currently there is no connection between the bike path that goes along the Mississippi up to Robert St and the South Saint Paul bike path that is just to the south. There needs to be a connection between Robert St/the river and between the South Saint Paul
- ▶ deteriorating infrastructure
- ▶ Develop bike trails along River bluff - both Mn and WI sides
- ▶ Develop Protected Bike Facility in NE Minneapolis along Great River Road/Mississippi River Trail
- ▶ for safety
- ▶ Fort Snelling State Park trails are in rough shape. They need resurfacing.
- ▶ Hardest part of the MRT to ride - no shoulder at all, hills.
- ▶ How amazing it would be to bike a continuous stretch of the river through the metro area!
- ▶ I don't know the facilities well enough to name what is needed, but I would like access to more information about biking options along the river.
- ▶ improve connections to the river
- ▶ improve shoulder on Highway 169
- ▶ making it easier for bikes to access
- ▶ more and better bicycle connections in Red Wing
- ▶ more bike trails needed
- ▶ Move MRT closer to the river south of Hastings to Red Wing
- ▶ Move MRT to west side of river where there are shoulders.
- ▶ Needs signage to get people to the underpass that you can't see from the intersection. Also there is no lighting here.
- ▶ nice ride station, better flow of bike lanes, better connection to downtown bike lanes
- ▶ Northern Minnesota could improve trail systems and increase access to and from state parks for enjoyment and attraction.
- ▶ One reason I don't bike to the University of St. Thomas from South St. Paul is the lack of an accessible bike route across the river and through the city
- ▶ Path along the River are sporadic - and mostly on a curved highway on MN side
- ▶ Paths need to be repaved
- ▶ Pave the GRR for improved bicycle access
- ▶ Provide for bike travel across river bridge
- ▶ Provide for safe pedestrian bicycle access across the river.
- ▶ Publicize area access and use.
- ▶ Repair West River Road!
- ▶ Road conditions for bikes need improvement. Narrow shoulder with debris.
- ▶ Safe roads or paths for bicycles. Ideal way to view the river valley.
- ▶ Safe separation of walking and biking.
- ▶ Safer bicycling along Marshall St NE
- ▶ Safer bicycling facilities.
- ▶ safety for bikers cars needs decrease speed
- ▶ Same as pedestrian. Pedestrian/Bicycle Bridge being promoted by the Lady Slipper Scenic Byway Board
- ▶ Separate bike and walking paths along East River Road in St Paul
- ▶ Sign the MRT in Clearwater County
- ▶ Signage and actual connectivity to Minneapolis
- ▶ The parkway just stops at the Plymouth Bridge, it needs to carry on to Coon Rapids dam.
- ▶ The WI Great River Road needs better bicycle lanes.
- ▶ too many bikers ride on the walking path. It is understandable why they do given the narrow bike path on only one side of the road. While I'm sure no one on the river road wants you to expand the road into their lawns, having a bike lane on each side would
- ▶ Upgrade and add shoulders along Ravine Trail to allow safe bicycling



- ▶ We have great routes established and in process, but they aren't easy to know how to connect from one to the other when you are mid-course.
- ▶ We need to complete the Cuyuna Lakes State Trail from Riverton to connect to the Paul Bunyan trail in Brainerd
- ▶ Widen shoulders
- ▶ Would be great to have a bicycle lane along this bridge, and better signage for accessing the pedestrian walkway southbound on 61 into Hastings.
- ▶ Would be wonderful to have an improved bicycle connection for the Mississippi River Trail between Hastings and Red Wing

### Pedestrian Comments

- ▶ add a ped/bike crossing here
- ▶ Add seperated bike and ped facility Cass Lake to Deer River
- ▶ At one wayside we found by accident last year, couldn't really even see or get to the river. Tons of interesting history along this route that is being missed or hidden or not even identified. River route is a hidden gem, but needs to be spruced up (green
- ▶ better pedestrian friendly walking along major streets, encourage more foot traffic, less car traffic
- ▶ Better walking signs, and especially public art influence outside toilets
- ▶ Combined bike and ped path dark narrow and in disrepair.
- ▶ Connect this trail to the water
- ▶ Connect this walking trail to the water
- ▶ Connect walking trail to the river.
- ▶ Hideous intersection to try and cross. Call box is 6' from 50+mph traffic.
- ▶ I don't know the facilities well enough to name what is needed, but I would like access to more information about hiking/walking options along the river.
- ▶ improve access to river
- ▶ In Cedar Riverside along the bluffs from Riverside Park to U of M the walkways need to be improved. They are disconnected. The views are wonderful but few people use them. Make it accessible and promote use.
- ▶ It would be a wonderful hike if there were a pathway from Maiden Rock to Pepin - so much history is along this stretch
- ▶ It would be nice to have walking/hiking trails that connect.
- ▶ More developed trails for hiking on both MN and WI sides south of the Twin Cities
- ▶ need safer environment for pedestrians not necessarily commuting or exercising. The river here has become something of a gym with a good view.
- ▶ no access to this large area down by the river, always seemed like a shame to waste this area
- ▶ Old horse road, can camp here. Improve connection to the water. Great canoeing here.
- ▶ Pedestrian travel across river bridge
- ▶ Pedestrian/Bicycle Bridge being promoted by the Lady Slipper Scenic Byway Board
- ▶ Preserve views into and out of river valley. Manage development project so as not to adversely affect the public ability to take advantage of views private developers could give to individual renters or owners through tall buildings
- ▶ Provide for safe pedestrian and bicycle travel across the bridge. Connect with interpretive site parking lot to the north.
- ▶ Repair West River Road!
- ▶ Safe separation of walking and biking.
- ▶ some parts of the path are in need of repair. because of the angle of a couple areas on the path, it is easy to twist an ankle. as a runner, I veer to the grass near these spots, but if the grass path is taken, I continue to run and have hurt my ankle a f
- ▶ Star Island Trails need maintenance and improvement
- ▶ The entire area east of Robert Street in Saint Paul is cut off from the River. It would be wonderful to see increased pedestrian access that connects to the rest of the West Side neighborhood.
- ▶ The North and Northeast Mpls portions need the trail network completed. I believe there's a plan for this - I'm looking forward to seeing it come together over time



- ▶ walking and bike paths for healthy recreation
- ▶ walking paths throughout

### Watercraft Comments

- ▶ Better access for canoes and small sailboats/rowing skiffs. Maybe rental opportunities.
- ▶ Can camp here on park land. Access water way with boats from short roads which branch off of 2167
- ▶ Canoe access site - better signage, portage marking, education
- ▶ Historic Ferry crossing needs non motorized access.
- ▶ I wonder if we can have some sort of a portage path around the closed lock. Clearly that would be only for small personal watercraft like canoes and kayaks, but still . . . It would add to the "voyageur" legacy.
- ▶ Improve canoe access
- ▶ Organize canoe overnight and/or day trips.
- ▶ Overnight accommodations
- ▶ Promote it.
- ▶ Provide a trail the river for canoe and kayak use
- ▶ Provide canoe storage, access for small boat use.
- ▶ Provide for parking and a trail to the river for canoe and kayak access
- ▶ Public Launch on West Side of River
- ▶ recreational watersport activities - primarily human powered - rentals, portage points, etc. upstream and downstream of the falls/dams
- ▶ We need more access for small boats/kayaks. There is sufficient access at marinas for big boats. Throughout the route this is needed.

### River View Comments

- ▶ 3 really great views: upper and lower quarry and one at the top
- ▶ Address slope erosion and slumping along TH 61 Lake City to LaCrescent
- ▶ All along the city edge preserve the goals of the Great River Passage Plan in St. Paul adopted into the city Comprehensive Plan
- ▶ All along the Minneapolis route and north the views are impaired (aside from downtown Mpls). River seems inaccessible and forgotten north of downtown up to Anoka area (and probably beyond, too, but I am not as familiar with that area since you need to kee
- ▶ All views of the river should be protected.
- ▶ As the Cuyuna Lakes Trail is developed westward towards Brainerd, there are stunning views of the river, particularly in the Northwoods property just east of the airport.
- ▶ Beautiful River view from the bridge. Undeveloped area
- ▶ Beautiful view of a wire sedge wetland with several open water ponds
- ▶ Beautiful view of Lake Windigo
- ▶ Beautiful views both upstream and downstream
- ▶ bqrn bluff
- ▶ Buena Vista park is a hidden treasure, and not very well known beyond a local level.
- ▶ cut down trees so we can SEE the river.
- ▶ Far too much industrial along both sides of the river in this area. What a waste!
- ▶ First sight of Downtown St Paul along the route.
- ▶ Ford Bridge view in Minneapolis - Minnehaha Falls.
- ▶ ford plant
- ▶ Garvin Heights Lookout
- ▶ Goat prairie restoration on the riverbank at the Great River Road Visitor and Learning Center
- ▶ Good area for a overlook of the river in both directions
- ▶ Great views of the old bridge upstream and the river and floodplain downstream
- ▶ Harbor Bar - best view of downtown red wing
- ▶ Identify scenic viewpoints with directions to get to the scenic view.
- ▶ Life time visual impression





- ▶ Make river accessible by all for viewing.
- ▶ Marshall Terrace Park & MWMO - great access to the river
- ▶ Natural stopping point along the route. Need safe space to park bikes, drink water and take photo op.
- ▶ Nice area for family and dogs near river. It could use some more amenities to accentuate it, such as an outdoor pavilion and picnic tables.
- ▶ People can canoe river and stop for camping.
- ▶ People should be able to recognize the start of this magnificent river.
- ▶ Protect river views and visual access to the river along Shepard Rd to safeguard both for all over time
- ▶ Re-route segment that veers east to follow the River.
- ▶ Restore vegetation impacted by CAPX2020 to reflect the Oak Savannah landscape lost
- ▶ Revegetate TH 2 to restore screening of CAPX2020 lines and pipeline corridor
- ▶ River inlet into Lake Bemidji covered by a highway bridge, surrounded by empty buildings and a waste water treatment plant.
- ▶ river views throughout
- ▶ Safeguard lake shore views from over development by increasing public green space and vegetative buffers along the lake edge.
- ▶ Safeguard river views, access to the views and a parkway setback and landscape as a part of the Ford Plant redevelopment.
- ▶ st paul gateway, ft snelling
- ▶ such a great location for a park, but almost no views to the river from it, and not an inviting park, so different somehow from gold medal. Same comment for Nicollet island park area
- ▶ The Charles A. Weyerhaeuser Memorial Museum site offers great views of the river.
- ▶ There are many lovely views of the river along the East and West sides. There are paved paths and even benches to rest on. Unfortunately, many trees and shrubs have grown up to block the views. It would be great to have more landscape management of the ar
- ▶ This is a great place to view the young Mississippi River in its unusual West to East segment. Looking west you can almost imagine you are a voyager contemplating launching your canoe as no development is visible.
- ▶ view at civic center park - can see up river further than other places
- ▶ "View of Blanchard Dam and the river on the bike/ped Soo Line Trail.
- ▶ Parking facilities/signage could be improved."
- ▶ view of capital from west side st paul
- ▶ Views from the bluff area by the u of M needs to be protected and better maintained. It would allow Cedar riverside neighbors to go to the wall and view the river. It needs better access and walk ways.
- ▶ Views of the Mississippi River from Riverside Park are well-used and should be protected for present and future generations to enjoy.
- ▶ While I'm not generally a fan of cutting down trees or removing plants, there is an area near here with two benches that looks out on a big tunnel across the river. It's a nice view and fun for kids, but once the leaves grow on the trees in mid spring, th
- ▶ Would like to see some parking turnouts at river crossings along the route. Currently there are no safe places to pull out and take photos. Larger signage would be nice tool.

### Other Comments

- ▶ Bena bike trail is Phase 1
- ▶ Camping and fishing site.
- ▶ Connect Bemidji Airport customers with GRR opportunities for river exploration
- ▶ Connect Brainerd Airport customers with GRR opportunities for river exploration
- ▶ Connect Grand Rapids Airport customers with GRR opportunities for river exploration
- ▶ Connect Holeman Field customers with GRR opportunities for river exploration
- ▶ Connect MSP customers with GRR opportunities for river exploration
- ▶ Connect Winona Airport customers with GRR opportunities for river exploration





- ▶ Create a land buffer to protect the quality of the water.
- ▶ Honor the history of this area (mpls north) and make it known via roadside markers, etc.
- ▶ I would love to see more destinations along the river front such as parks, restaurants, etc
- ▶ Keep buildings, parking, and other structures off available open space - protect views, openness. Declutter & minimize signs.
- ▶ Land owner clear cut lot at top of bluff. No real fine was enforced. Added flood lights to the yard that is visible across the river. Just bad behavior all around and he only got a slap on the wrist.
- ▶ Let's get everyone access to the river here!
- ▶ Phase 2
- ▶ Protect the entire road from mining and heavy truck transport.
- ▶ Provide for fishing access on the upstream side of bridge and connect with trail to interpretive parking to the north
- ▶ Seems to me that it is easy to lose the Great River Road path here because signage is lacking.
- ▶ stop the oil pipe from going along the mississippi
- ▶ The Bdote (Mendota) area is the place of the origin story of the Dakota people, and site of a Dakota concentration camp in 1862. This history is not being sufficiently honored, and the marginalization of Dakota people, who possess less than one tenth of o
- ▶ Think rest stops for pedestrians and bikers, similar to highway rest stops
- ▶ use citizens to help control invasive species, and to help clean up river more than once a year.
- ▶ Winery Sign - Danzinger Vineyard
- ▶ Winery Sign - Falconer Vineyard
- ▶ Winery Sign - Flower Valley Vineyard
- ▶ Winery Sign - Great River winery
- ▶ Winery Sign - Maiden Rock Winery
- ▶ Winery Sign - Riverview Vineyard
- ▶ Winery Sign - Seven Hawks
- ▶ Winery Sign - Villa Bellezza
- ▶ Winery Sign Garvin Heights Vineyards
- ▶ Winnie Dam Rd is hopeful Phase 3.



### Other Feedback

Other comments received at the end of the Metro Quest survey:

- ▶ Emphasize the fact that the Great River Road passes through the National Park that is the MNRRRA.
- ▶ Excellent survey interaction.
- ▶ Glad to see this evaluation and planning in process. Keep it up!
- ▶ I am really concerned about keeping the waterways clean.
- ▶ i think it would be wonderful if the Great River Road could also be the Great River walk/bike way. I think of when I'm walking parts of the Thames path in England. No car required.
- ▶ I'm an avid bike rider and have always been disappointed that bicycle infrastructure along many parts of the Minnesota GRR is non-existent.
- ▶ I'm glad to see this survey being done. I hope it spurs more change!
- ▶ It is one of the greatest rivers in the world (as we all know). It deserves a great "road".
- ▶ It's a pay to play world. If they don't help to pay to keep up the road they shouldn't be on your list to promote using it with the small amount of money you have to market it.
- ▶ Local League of Women Voters are working on Mississippi River education - as we work out our process - will be in touch!
- ▶ Lots of recent progress on appreciating and protecting this long ignored resource. De-industrialization should be a big consideration.
- ▶ Miigwech!
- ▶ Need link to GreatRiverRoadWineTrail.org
- ▶ Previous question with dragging & dropping way too hard to understand - and I know the river quite well. Do a lot of hiking and birding in this stretch and some canoeing. Really I think you need to ask simpler and more specific questions.
- ▶ Repair the landslide on West River Road and don't take so long. A bulldozer and pile driving some metal posts should do it. At least allow bikers and walkers through. Keeping it closed in the heart of the city and in the heat of summer is stupid.
- ▶ Thanks for asking for varied input through this survey- great idea!
- ▶ Thanks for the opportunity to give input!
- ▶ Thanks for your great work. Living close to the gorge as I do I notice the lack of public toilets leads to runners and walkers dropping down into the bushes and paths below the street level to relieve themselves. Can we find public art sensitive approach
- ▶ The Great River Road should be more closely aligned with the Mississippi River Trail - seems like outreach, planning & resources could be more closely coordinated
- ▶ The opportunities tab is confusing.
- ▶ The recent developments are terrific. Excited to see the progress!
- ▶ This is a great opportunity to connect the new immigrant population to the beauty of the river as well as promoting the use of the river way for multi modes of travel
- ▶ this is a national treasure
- ▶ This survey is 'overwritten'--it's unrealistic to expect the general public to know how to specify timeframes for these goals.
- ▶ We love knowing about the history of places and people along the River. We are not so keen on social media at our ages.
- ▶ You know, I am not that familiar with the Great River Road, and wish that the state that the Mississippi originates in had a more well-developed way for its citizens to interact with it -- I couldn't tell you much about it beyond what it's like in Itasca